



TECHNICAL

09 DECEMBER 2025

PIN POINT

SET INDEX	Dropping to 1,250-1,255 pts support zone and then rising today
TECHNICAL PICKS	Buy TRUE at B11.00-11.20, Buy PLANB at B4.04-4.08
DR PICKS	Buy BIDU80 at B5.00-5.10, Buy BKNG80 at B3.26-3.30
S50H26	Hold S50H26 long at 818-820 pts, take profit at 830-835 pts, cut loss below 810 pts
BGRIMZ25	Hold BGRIMZ25 short at B14.30, take profit at B13.60, cut loss +B0.30 from cost
GOH26	Open GOH26 long at US\$3,980-4,120, cut loss at US\$3,900



SET INDEX

Support 1,250-1,255 Resist 1,265-1,270

On December 8, institutions were net sellers at B982m. Proprietary traders were net sellers at B914m. Foreigners were net buyers at B1,024m. Retail traders were net buyers at B872m. SET Index today is expected to fall to 1,250-1,255 pts support zone (limited downside) and then rebound. Yesterday, SET Index fell in line with the guideline and closed with the leading diagonal pattern, signaling a plunge. Today it should not fall below 1,252 pts and make a bearish breakout from the pattern (worst-case scenario). Otherwise, it may enter fall into a downtrend.

Tactic

Trading after it stands above 1,260 pts (EMA200).

S50H26

Support 818-820 Resist 830-835

On December 8, foreigners opened 2,266 net short contracts. Institutions opened 4,289 net long contracts. Retail traders opened 2,023 net short contracts (first time in three days). S50H26 today is expected to swing sideways around 818-830 pts in the channel line. It was taking a rest in Wave 2 in the minor low volume node (LVN) before taking a rest. If it surpasses 835 pts, it will enter Wave 3. Yet, if it falls below Wave 1 at 810 pts (worst-case scenario), it may fall in a downtrend.

Tactic

Open a long position of S50H26 at 818-820 pts, taking profit first time at 830-835 pts and cutting loss below 810 pts.



Warning

Investments involve risks. Please carefully review the product details, conditions of return, and risks before making any investment decisions

Technical Picks

TRUE

Support 11.0-11.2 | Resist 11.60

Recommendation

BUY

TRUE was making a reversal-up. It was about to complete Wave C in the zigzag pattern, taking a rest. It was entering Wave 1 in a minor uptrend.

RSI rose to 56%.

ACTION

Buy TRUE at B11.00-11.20, taking profit at B11.60 and cutting loss below B10.80.



PLANB

Support 4.04-4.08 | Resist 4.20

Recommendation

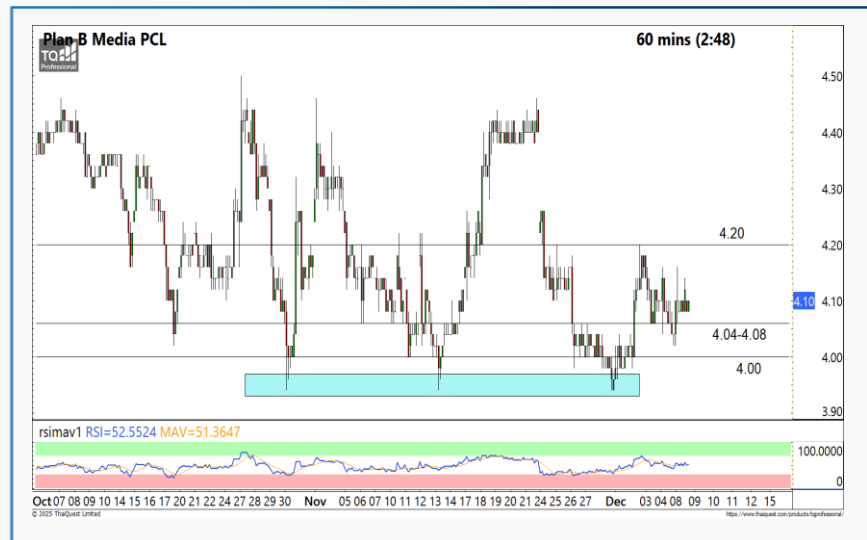
BUY

PLANB was swinging sideways and forming a triple bottom in line with the Elliott Wave. It completed Wave 5 and recently showed a reversal momentum.

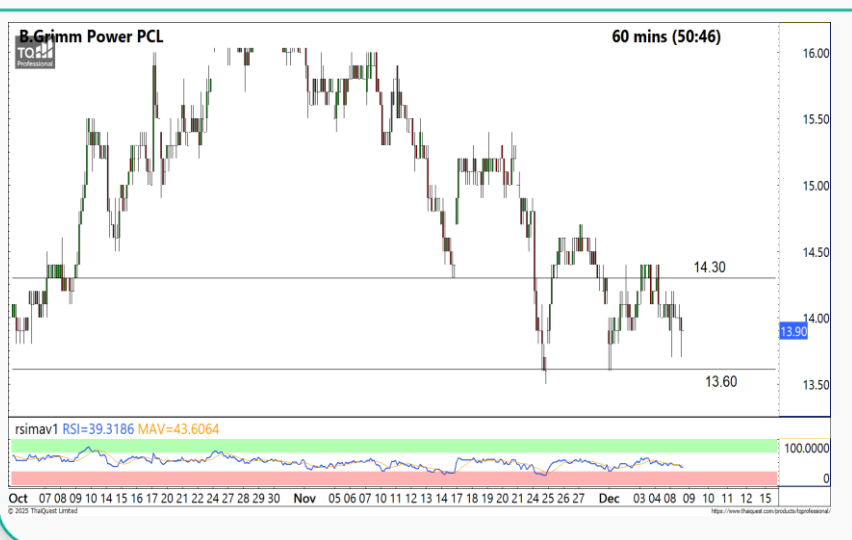
RSI rose to 53%.

ACTION

Buy PLANB at B4.04-4.08, taking profit at B4.20 and cutting loss below B4.00.



Single Stock Futures (SSF)



BGRIMZ25

Support 13.50 | Resist 14.60

Recommendation

SHORT

Parent company BGRIM made a short-term pullback to the previous minor resist zone. Then, it may make a reversal and make a new low. Open a short position.

ACTION

Open a short position of BGRIMZ25 (based on BGRIM) at B14.30, taking profit at B13.60 and cutting loss +B0.30 from the cost.

DR Picks

BIDU80



BIDU80 was making an uptrend reversal. It was in Wave 5 of the cycle.

Parent company 9888 (Baidu) may make a reversal and test HKD141.5.

ACTION

Buy BIDU80 at B5.00-5.10, taking profit at B5.35 and cutting loss below B4.96.

BKNG80



BKNG80 was making an uptrend reversal. It was in Wave 3 of the cycle, after completing Wave C of the zigzag pattern Wave 2.

Parent company BKNG was standing above EMA200, probably rising to US\$5,770.

ACTION

Buy BKNG80 at B3.26-3.30, taking profit at B3.38 and cutting loss below B3.22.

TOP 3 Most Active Value

AOT

Recommendation

Support 50.50 Resist 55.00

Uptrend

AOT was in a major and minor uptrend and formed a gap, recently showing a reversal-down signal.
RSI was 69%, entering the neutral zone.



KBANK

Recommendation

Support 186 Resist 192

Uptrend

KBANK was in a major and minor uptrend, showing a reversal-down signal from the rising wedge.
RSI was 55%, entering the neutral zone.



DELTA

Recommendation

Support 185 Resist 197

Sideways

DELTA was swinging sideways and slowing dropping; it may plummet.
RSI was 25%, entering the lower zone.



Gold Spot



GOH26

Support \$3,980-4,120

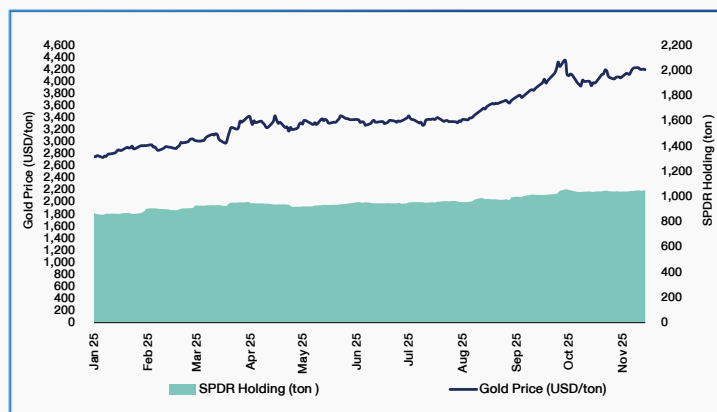
Resist \$4,310-4,400

New York Fed's survey (Dec 8) shows inflation expectations one year ahead (2026 expectations) in November at 3.2%yoy (unchanged). Reported on December 9, JOLTS job openings in September is expected at 7.20 million, down from 7.22 million in August. Watch the FOMC meeting on December 11; Fed Watch Tool sees 88.4% chance that Fed may cut the interest rate by 0.25% to 3.75%. On December 8, SPDR sold 1.14 tons or 0.1%, resulting in net gold holding of 1,049.11 tons.

COMEX gold price was still swinging at the beginning of Wave 4 in the major triangle, taking a rest in Wave B of the major triangle of around US\$3,885-4,381. In a minute chart, it was in Wave b of Wave (y) and forming the double zigzag pattern in Wave B. If it surpasses US\$4,260 and completes Wave a, it may test the previous high of US\$4,381 with bearish rally. Otherwise, it may fall to support zones of US\$4,125-4,150 and US\$3,820-4,120. This week it is expected to form a triangle or a flat pattern, continuing from the previous waves, swinging sideways and taking a rest before rising later.

Tactic

- Open a long position of GOH26 at US\$3,980-4,120, cutting loss below US\$3,900.



Security	CG Report	SET ESG Ratings	CAC Anti-Corruption	Security	CG Report	SET ESG Ratings	CAC Anti-Corruption	Security	CG Report	SET ESG Ratings	CAC Anti-Corruption	Security	CG Report	SET ESG Ratings	CAC Anti-Corruption	Security	CG Report	SET ESG Ratings	CAC Anti-Corruption	Security	CG Report	SET ESG Ratings	CAC Anti-Corruption	Security	CG Report	SET ESG Ratings	CAC Anti-Corruption	Security	CG Report	SET ESG Ratings	CAC Anti-Corruption
2S	4	-	Yes	CBG	-	-	-	GTB	5	-	-	MEB	3	-	-	PSH	5	AA	Yes	SSRT	-	-	-	TVO	5	AAA	-	-	-	-	
3BFI	-	-	-	CCET	-	-	-	GTV	3	-	-	MEDEZE	3	-	-	PSL	5	AA	Yes	STA	5	AAA	Yes	TVT	4	-	-	-	-		
88TH	-	-	-	CCP	-	-	-	GULF	5	AAA	-	MEGA	5	-	Yes	PSP	5	-	-	STAN	3	-	-	TWP	-	-	-	-	-		
A	-	-	-	CEN	3	-	Yes	GUNKUL	5	AA	-	MENA	3	-	Yes	PSTC	4	-	Yes	STAR	5	-	Yes	TWPC	5	A	-	Yes	-		
A5	4	-	-	CENTEL	5	AAA	-	GUREIT	3	-	-	META	5	-	Yes	PT	4	-	Yes	STC	3	-	-	TWZ	-	-	-	-	-		
AAI	5	-	Yes	CE	-	-	-	GEV	3	-	-	METCO	4	-	-	PTC	5	-	-	STECH	5	-	-	TYCN	-	-	-	-	-		
AAV	5	-	-	CFARM	4	-	-	HANA	5	AA	Yes	MFC	5	A	Yes	PTCH	3	-	Yes	STECON	5	AA	-	UAC	5	A	-	-	-		
ABM	4	-	-	CFRESH	5	A	Yes	HANN	-	-	-	MFE	5	AAA	Yes	PTG	5	-	Yes	STELLA	-	-	-	UBA	4	-	-	-	-		
ACAP	-	-	-	CGD	-	-	-	HARN	5	A	Yes	MGC	5	-	-	PTL	-	-	-	STGT	5	AAA	Yes	UBE	5	A	-	Yes	-		
ACC	-	-	-	CGH	5	-	Yes	HEALTH	-	-	Yes	MGI	-	-	-	PTT	5	AAA	Yes	STI	5	-	-	UBIS	5	-	-	Yes	-		
ACE	5	AAA	Yes	CH	4	-	-	HENG	5	AA	Yes	MGT	5	-	-	PTTE	5	AA*	Yes	STOWER	5	-	Yes	UEC	5	-	-	Yes	-		
ACG	4	-	-	CHAO	3	-	-	HET	-	-	-	MICRO	4	BBB	-	PTTGC	5	AAA	Yes	STP	-	-	-	UKEM	3	-	-	Yes	-		
ADB	5	AA	Yes	CHARAN	3*	-	-	HL	-	-	-	MDA	-	-	-	PYLON	3	-	Yes	STPI	3	-	-	UMI	-	-	-	-	-		
ADD	4	-	-	CHASE	5	A	Yes	HMPRO	5	AA	Yes	MI	-	-	-	Q-CON	5	BBB	Yes	STX	3	-	-	UMS	-	-	-	-	-		
ADVANC	-	AA	Yes	CHAYO	3	-	-	HMP	-	-	-	MILL	3*	-	-	OH	5	-	Yes	SUC	5	-	-	UNIQ	-	-	-	-	-		
ADVCE	-	-	-	CHIEWA	5	-	Yes	HPT	5	-	-	MINT	5	AA	-	QHRREIT	-	-	-	SUN	5	BBB	-	UOBKH	3	-	-	Yes	-		
AE	4	-	Yes	CHG	5	-	-	HTC	5	AA	Yes	MPF	-	-	-	QHRREIT	-	-	-	SUPER	4	-	-	UP	5	-	-	-	-		
AEONTS	5	-	-	CHIC	3	-	-	HTECH	-	-	-	MITSIB	3	-	-	QHR	-	-	-	SUPERIF	-	-	-	UPF	5	BBB	Yes	-	-		
AF	5	-	Yes	CHO	-	-	-	HUMAN	4	-	-	MJD	-	-	-	QLT	4	BBB	Yes	SUTHO	5	-	Yes	UPOIC	5	BBB	-	-	-		
AFC	-	-	-	CHOTI	3	-	Yes	HYDRO	-	-	-	MJLF	-	-	-	QTC	5	AA	Yes	SUTHA	5	AA	-	UREKA	4	-	-	-	-		
AGE	-	-	-	CHOW	5	-	Yes	HYDROGE	-	-	-	ML	3	-	-	QTC	5	AA*	Yes	SVI	4*	-	Yes	UTP	-	-	-	-	-		
AH	4*	-	-	CHOW	5	-	-	ICZ	3	-	-	ML	-	-	-	RABBIT	5	-	Yes	SVQA	5	AA	Yes	UV	5	-	-	Yes	-		
AHC	3	-	-	CIG	4	-	Yes	IC	5	-	Yes	MNIT	-	-	-	RAM	3	-	-	SVR	3	-	-	UVAN	-	-	-	-	-		
AI	-	-	Yes	CIMBT	5	-	Yes	ICHI	5	A	Yes	MNITZ	-	-	-	RATCH	5	AAA	Yes	SVT	3	-	Yes	VARO	3	-	-	-	-		
AIE	3	-	-	CITY	3	-	-	ICN	4	-	Yes	MNRF	-	-	-	RBF	5	A	Yes	SWC	4	-	-	VCOM	4	-	-	Yes	-		
AIMCO	-	-	-	CIVIL	5	-	-	IFS	4	-	Yes	MODERN	5	A	-	RCL	4	-	-	SYMC	5	BBB	Yes	VGI	5	AA	-	Yes	-		
AMIRIT	-	-	-	CK	5	AA	-	IL	5	-	-	MONO	5	-	-	READY	5	-	-	SYNEX	5	-	-	VIBHA	5	BBB	-	-	-		
AIRA	5	-	Yes	CKP	5	AAA	-	IG	-	-	-	MOONG	5	A	Yes	RADY	-	-	-	SYNTEC	5	-	Yes	VIH	5	A	-	Yes	-		
AIT	4	-	-	CM	4	A	Yes	II	5	AA	Yes	MORE	-	-	-	RJH	3	-	-	TACC	5	-	-	VL	3	-	-	-	-		
AJA	5	AAA	Yes	CMAN	4	-	-	ILINK	5	AA	Yes	MOSHI	5	A	Yes	RML	3	-	Yes	TAE	4	-	Yes	VNG	5	-	-	Yes	-		
AJA	-	-	-	CMC	5	-	Yes	ILM	5	AA*	Yes	MOTHER	-	-	-	ROCK	3	-	-	TAKUNI	3	-	Yes	VPO	-	-	-	-	-		
AKR	5	BBB	-	CMH	4*	-	-	IMP	3	-	-	M-PAAT	-	-	-	ROCTEC	-	-	-	TAN	-	-	-	VRANDA	4	-	-	-	-		
AKS	-	-	-	CMR	-	-	-	IMPACT	-	-	-	MPJ	3	-	-	ROH	-	-	-	TAPAC	-	-	-	VS	-	-	-	-	-		
ALLA	5	A	-	CNT	5	-	-	IND	5	-	-	MSC	5	A	Yes	ROUNA	-	-	-	TASCO	5	AA	Yes	WACOAL	5	A	-	Yes	-		
ALLY	-	-	-	COCOCO	4	-	-	INET	5	-	Yes	MST	5	-	Yes	RP	-	-	-	TATG	3	-	-	WARRIX	4	-	-	-	-		
ALPHAX	-	-	-	COLOR	5	A	-	INETREIT	-	-	-	M-STOR	-	-	-	RPC	3	-	-	TBN	5	-	Yes	WAVE	4*	-	-	-	-		
ALT	5	-	-	COMIT	5	AA	Yes	INGRS	-	-	-	MTRC	5	AAA	Yes	RPH	4	-	-	TC	-	-	-	WELL	-	-	-	-	-		
ALUOON	4	-	-	COMAN	4*	-	-	INOX	-	-	Yes	MTI	5	AA	Yes	RS	5	-	Yes	TCAP	5	AA	Yes	WFX	3	-	-	-	-		
AMA	5	-	Yes	CPALL	5	AAA	Yes	INSET	5	BBB	-	MTW	-	-	-	RSP	-	-	-	TCC	-	-	-	WGE	5	-	-	-	-		
AMANAH	3	-	-	CPANEL	-	-	-	INSURE	5	-	Yes	MUD	-	-	-	RT	5	-	-	TCJ	-	-	-	WHA	5	AAA	Yes	-	-		
AMARC	-	-	-	CPAXT	5	AAA*	-	IP	5	-	-	MVP	4*	-	-	RWI	-	-	Yes	TOMC	5	-	Yes	WHABT	-	-	-	-	-		
AMARIN	5	-	Yes	CPF	5	AAA	Yes	IRC	5	A	-	NAM	3	-	-	S	5	AA	Yes	TODART	-	-	-	WHAR	-	-	-	-	-		
AMATA	5	AAA	Yes	CPH	5	-	-	IRCP	3	-	-	NAT	-	-	-	S&J	5	AA	Yes	TEAM	-	-	-	WHART	-	-	-	-	-		
AMATAR	5	-	-	CPI	4	-	Yes	IROYAL	-	-	-	NATION	3	-	Yes	S11	-	-	-	TEAMG	5	-	-	WHAUP	5	AAA	Yes	-	-		
AMATAV	5	AA	Yes	CPL	5	-	Yes	IRPC	5	-	Yes	NC	4	-	-	SA	5	-	-	TEGH	5	AAA	Yes	WICE	5	AA	-	Yes	-		
AMC	4	-	-	CPN	5	AAA	Yes	ISSARA	-	-	-	NCAP	3	-	Yes	SAAM	5	-	Yes	TEKA	5	-	-	WIK	3	-	-	Yes	-		
AMR	3	-	-	CPNGD	-	-	-	ITC	5	A	-	NCH	4	-	-	SABINA	5	AAA	Yes	TERA	-	-	-	WIN	4	-	-	-	-		
ANAN	4	-	-	CPNREIT	-	-	-	ITC	5	-	Yes	NCL	4	-	-	SAC	5	-	-	TERA	-	-	-	WINDOW	-	-	-	-	-		
ANI	3	-	-	CPR	-	-	-	ITD	-	-	-	NCP	-	-	-	SAFE	3	-	-	TEG	5	AA	Yes	WNMED	5	-	-	-	-		
AOT	5	AA	-	CPT	-	-	-	ITE	5	A	Yes	NDR	4	-	-	SAK	5	A	Yes	TEH	3	-	Yes	WNNER	5	-	-	-	-		
APO	5	A	Yes	CPTREIT	-	-	-	ITNS	3	-	-	NEO	4	-	-	SALICE	3	-	-	TFM	4	-	-	WORK	3	-	-	-	-		
APCO	4	-	-	CPW	5	-	Yes	ITTH	5	-	-	NEP	5	-	Yes	SAM	-	-	-	TFMAMA	5	AAA	Yes	WP	5	-	-	-	-		
APCS	4	-	Yes	CRANE	3*	-	-	ITV	5	-	-	NER	5	A	Yes	SAMART	5	-	-	TGE	5	A	Yes	WPH	5	-	-	-	Yes		
APO	-	-	-	CRC	5	AA	Yes	IVL	5	AAA	Yes	NETBAY	-	-	-	SAMCO	4	-	-	TGH	5	AA	Yes	WSOL	-	-	-	-	-		
APP	-	-	-	CRD	4	-	-	J	5	-	-	NEW	-	-	-	SAMTEL	5	-	-	TGPRO	-	-	-	XBIO	-	-	-	-	-		
APURE	3	-	-	CREDIT	5	-	Yes	JAK	-	-	-	NEWS	-	-	-	SANKO	4	-	-	TH	-	-	-	XO	4	A	-	Yes	-		
AQUA	3	-	-	CSC	4	-	Yes	JAS	5	-	Yes	NEX	3	-	-	SAPPE	4	A	-	THAI	-	-	-	XPG	4	-	-	-	-		
ARIN	3	-	-	CSP	3	-	-	JCH	3	-	-	NFC	-	-	-	SAR	5	AA	Yes	THANA	5	BBB	-	XYZ	4	-	-	-	-		
ARIP	5	-	-	CSR	-	-	-	JCH	-	-	-	NGI	5	-	Yes	SAUCE	-	-	-	THAN	5	AA	Yes	YGG	-	-	-	-	-		
ARROW	3	-	-	CSS	3	-	-	JCT	-	-	-	NKT	-	-	-	SAV	5	-	-	THOOM	5	AAA	Yes	YONG	-	-	-	-	-		
AS	-	-	Yes	CTARAF	-	-	-	JDF	4	-	-	NL	4	-	-	SAWAD	5	AA	-	THE	-	-	-	YUASA	3	-	-	Yes	-		
ASAP	-	-	-	CTW	-	-	-	JKN	-	-	-	NNCL	-	-	-	SAWANG	-	-	-	THG	3*	-	-	ZAA	3	-	-	-	-		
ASEFA	-	-	-	CV	-	-	Yes	JMT	5	A	Yes	NBCL	5	AAA	Yes	SCAP	5	AA	Yes	THP	5	A	Yes	ZEN	5	AA	-	Yes	-		
ASIA	3	-	-	CMT	3	-	-	JNT	5	BBB	-	NDA	3	-	-	SCAP	5	-	-	THMUI	-	-	-	ZIGA	4	-	-	Yes	-		
ASIAN	5	-	Yes	DCC	5	-	Yes	JR	-	-	Yes	NPF	5*	-	Yes	SCB	5	AA	Yes	THRE	5	-	Yes	-	-	-	-	-	-		
ASIMAR	5	-	-	DDON	-	-	-	JSP	4	-	-	NSL	4	-	-	SCC	5	AAA	Yes	THREL	5	A	Yes	-	-	-	-	-	-		
ASK	5	A	Yes	DDO	5	-	-	JTS	5	-	-	NTSC	4	-	-	SCCC	5	AA	Yes	TIDOR	4*	-	-	-	-	-	-	-	-		
ASN	3	-	-	DELTA	5	A	Yes	JUBLE	5	-	Yes	NTSC	4	-	-	SCG	5	AA	Yes	TIF1	-	-	-	-	-	-	-	-	-		
ASP	5	-	Yes	DEMCO	5	BBB	Yes	K	4	-	Yes	NTV	4	-	-	SCOD	5	A	Yes	TIGER	-	-	-	-	-						

Certified : This level indicates practical participation with thoroughly examination in relation to the recommended procedures from the audit committee or the SEC's certified auditor, being a certified member of Thailand's Private Sector Collective Action Coalition Against Corruption programme (Thai CAC) or already passed examination to ensure independence from external parties.

Declared : This level indicates determination to participate in the Thailand's Private Sector Collective Action Coalition Against Corruption programme (Thai CAC)

"Disclaimer: The disclosure of the survey result of the Thai Institute of Directors Association (IOD) regarding corporate governance is made pursuant to the policy of the Office of the Securities and Exchange Commission. The IOD survey is based on the information of a company listed on the Stock Exchange of Thailand and the Market for Alternative Investment disclosed to the public and able to be accessed by a general public investor. The result, therefore, is from the perspective of a third party. It is not an evaluation of operation and is not based on inside information

The survey result is as of the date appearing in the Corporate Governance Report of Thai Listed Companies. As a result, the survey result may be changed after that date. Asia Plus Securities Public Company Limited neither confirms nor certifies the accuracy of such survey results.

"Disclaimer: The disclosure of the Anti-Corruption Progress Indicators of a listed company on the Stock Exchange of Thailand, which is assessed by the relevant institution as disclosed by the Office of the Securities and Exchange Commission, is made in order to comply with the policy and sustainable development plan for the listed companies. The relevant institution made this assessment based on the information received from the listed company, as stipulated in the form for the assessment of Anti-corruption which refers to the Annual Registration Statement (Form 56-1), Annual Report (Form 56-2), or other relevant documents or reports of such listed company. The assessment result is therefore made from the perspective of a third party. It is not an assessment of operation and is not based on any inside information. Since this assessment is only the assessment result as of the date appearing in the assessment result, it may be changed after that date or when there is any change to the relevant information. Nevertheless, Asia Plus Securities Public Company Limited neither confirms, verifies, nor certifies the accuracy and completeness of the assessment result."